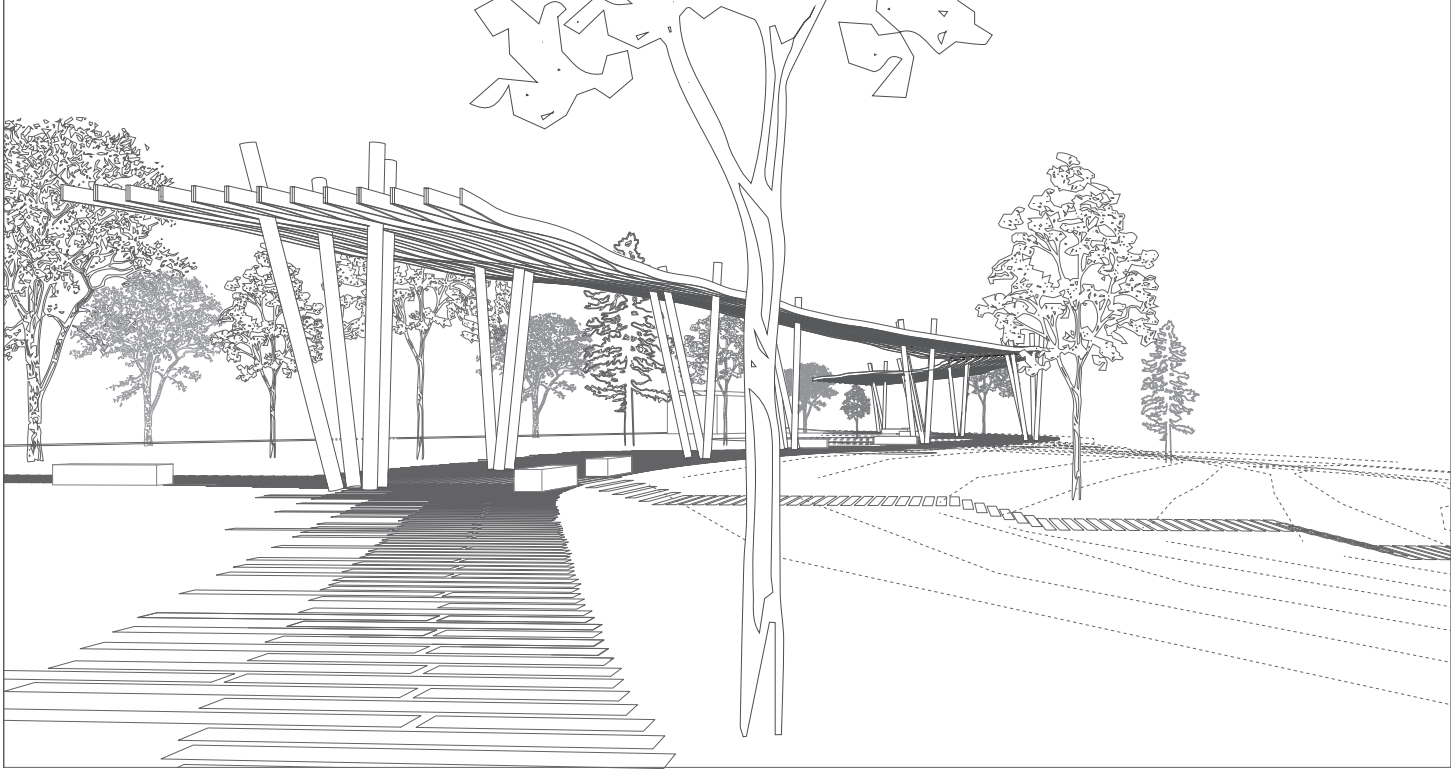


**Mill Riverfront Park, Stamford, Connecticut, 2009-2010.** First prize competition winner of an open ideas competition to design an entry point and urban park alongside a portion of the Mill River riparian wetland and Stamford's urban edge. The program consisted of a "porch" between the city and the river zone via a canopy structure, an amenity building for a historic carousel, and an out building for toilets and refreshments.

The canopy was studied at multiply scales and was an offshoot of GOA's mass timber research exploring the circular and aesthetic qualities of wood laminations. The design is a continuous interweaving wooden members with steel tie rods. The steel rods push the tensile and torsion limits of the wood into an accordion-like structure. The figural quality creates playful shadow effects, and evokes the form of the river and its dynamic forces.

**Designer,** Competition & Schematic Design  
21,575 SF Site Area (2,005 SQM)  
\*First prize competition winner

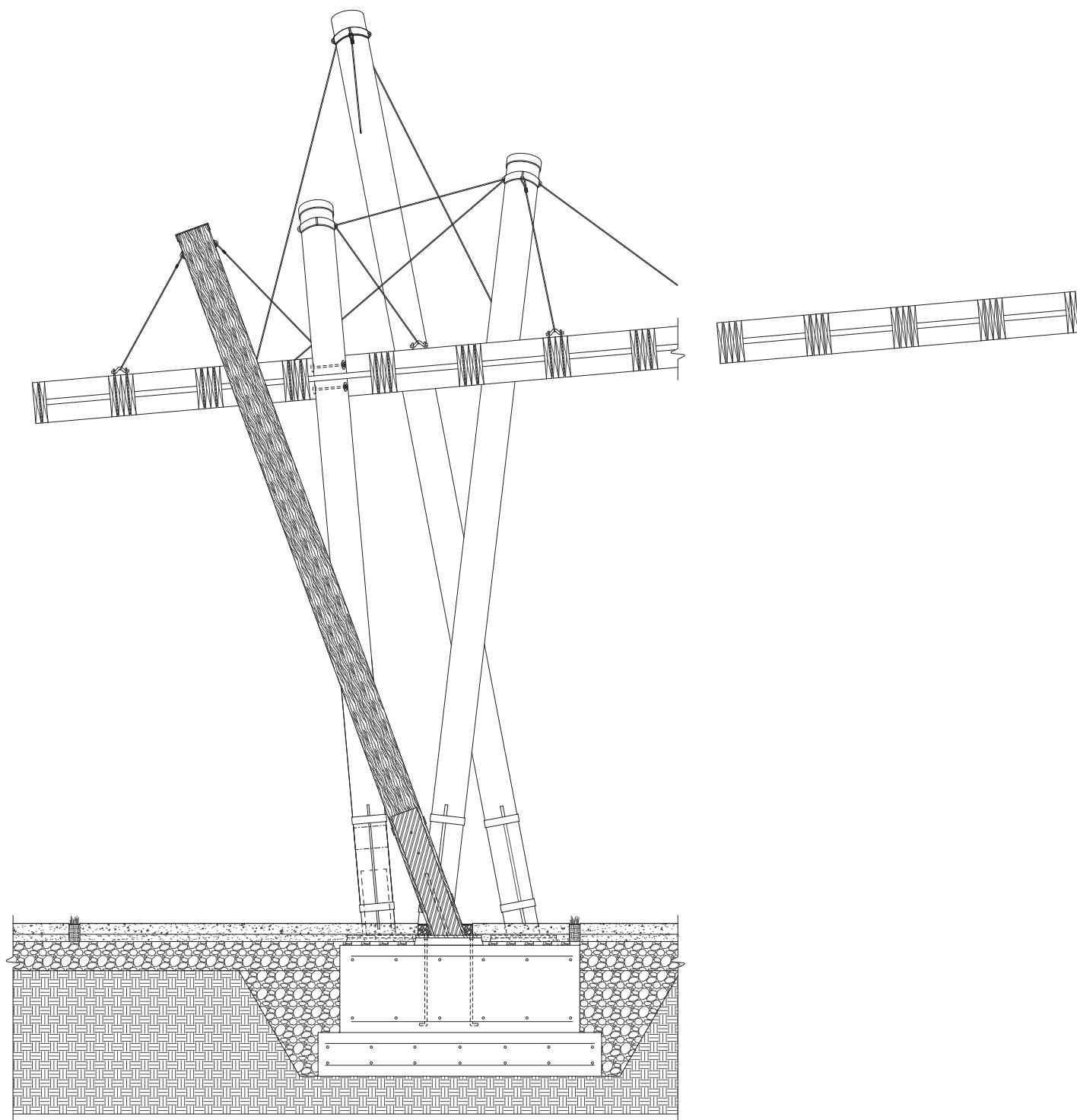
**GOA Gray Organschi Architecture**



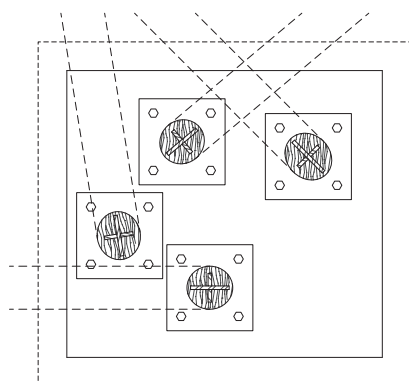
View along canopy pathway at river's edge

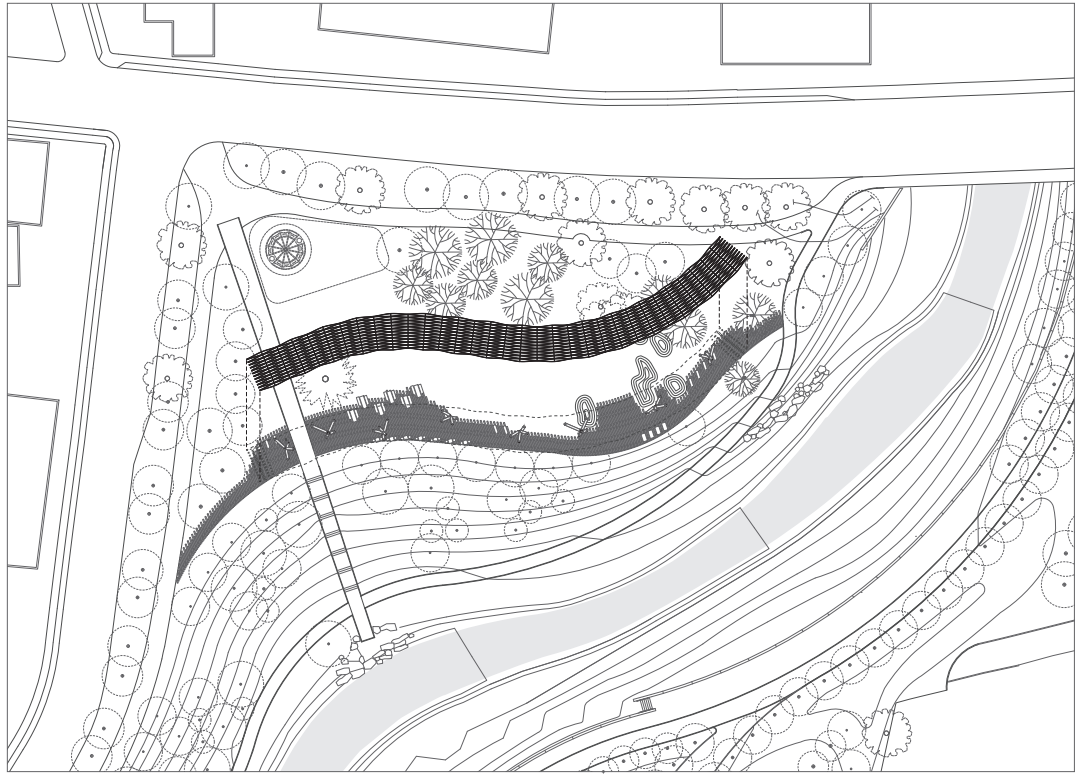


Canopy mock-up (1/4 & 1/2 scale)

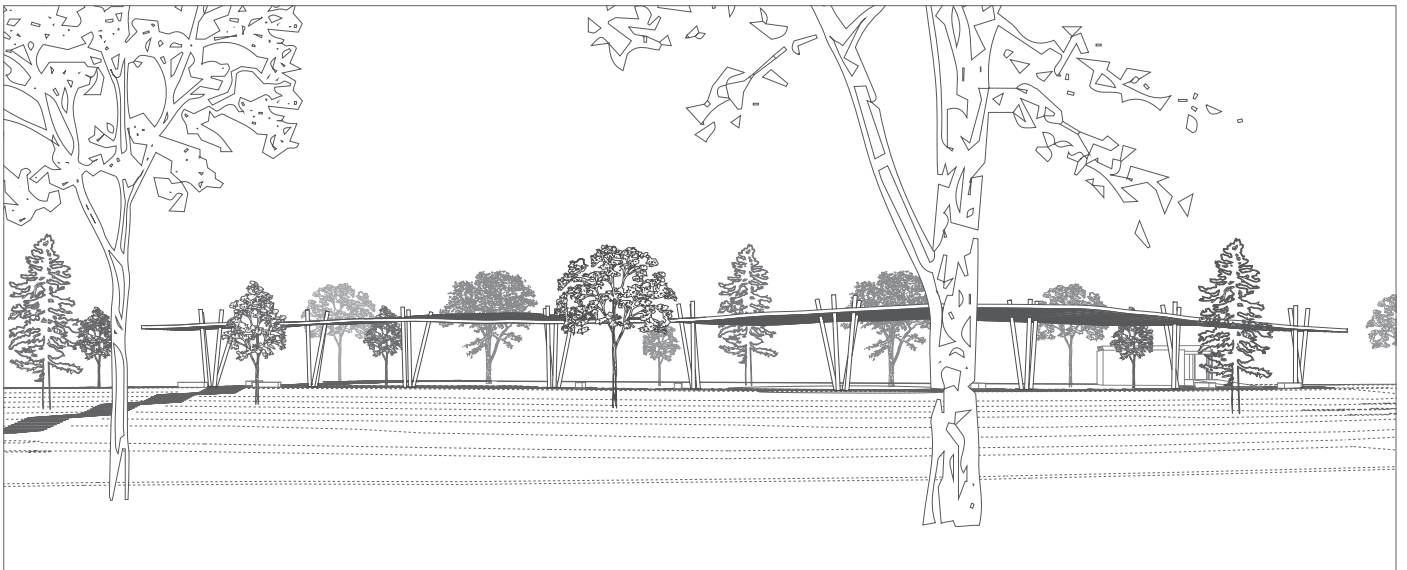


Typical wall section / foundation plan





Site plan axonometry



View from river bank